



*inspired by  
craftsmanship*

## **GS series**

Four side planing and moulding machine



The GS series four sided moulder and planer with 4 or 5 spindles is designed to meet all the needs of small and medium enterprises. When used in a joinery workshop the machine can prepare all the planed wood and make all the beading required for window manufacturing.

The rugged machine frame is made from ribbed cast iron and high precision spindles create a smooth surface finish. Main control levers for the spindle are located at the front of the machine for convenient adjustment. Variable feed speed makes this machine ideal for machining of all types of wood.



CE certification

## Technical data

### Capacity

- planing width 10-230 mm
- planing thickness 7 - 125 mm
- Min. working length 230 mm
- Feed speed 6-25 m/min

### Spindle

- Spindle speed 6000 rpm
- Spindle diameter  $\varnothing$ 40 mm
- Adjustment of vertical spindle (axial) 30 mm
- Adjustment of horizontal spindle (axial) 20mm

### Cutter diameter

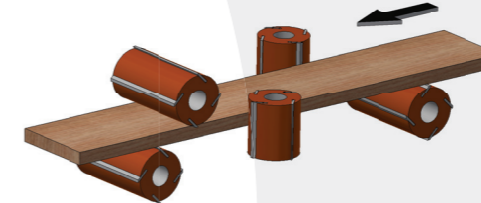
- First bottom horizontal spindle  $\varnothing$ 100 - 150 mm
- Right / left vertical spindle  $\varnothing$ 100 - 180 mm
- Top horizontal spindle  $\varnothing$ 100 - 180 mm
- Bottom horizontal spindle  $\varnothing$ 100 - 205 mm (just GS-523)

### Motor power

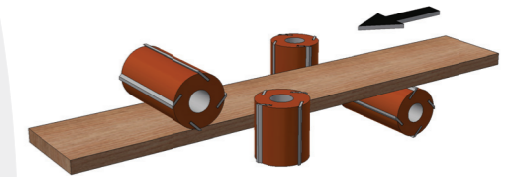
- Bottom horizontal spindle 7 HP
- Right / left vertical spindle (1PC) 10 HP
- Top horizontal spindle 7 HP
- Bottom horizontal spindle 7 HP (just GS-523)
- Feed power 3 HP

### Other

- Infeed table length 2000 mm
- Weight 2800 kg (GS-423), 3200 kg (GS-523)

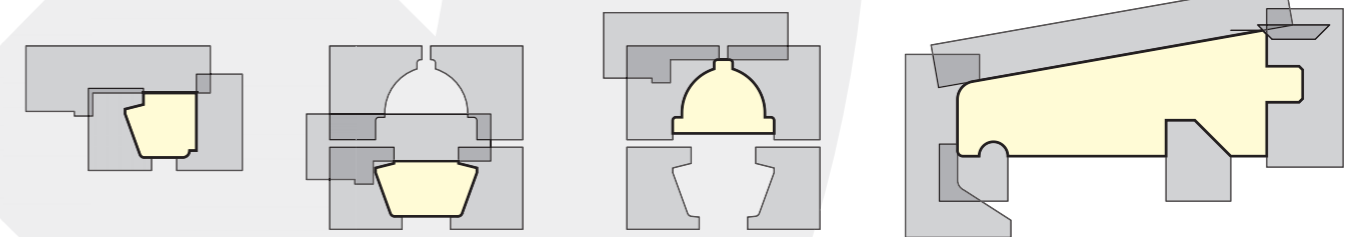


5-Spindle GS-523



4-Spindle GS-424

Efficient bead manufacturing with adjustable tooling

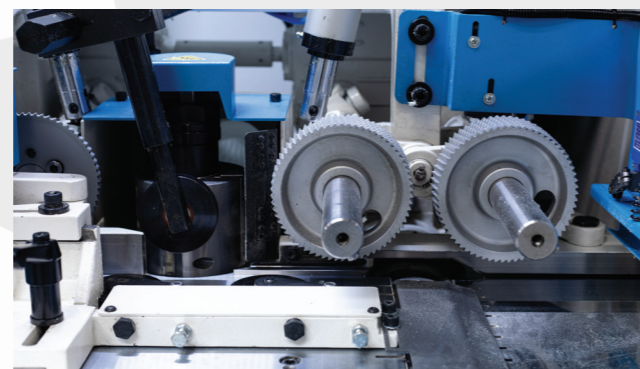


## GS series

Front and rear pressure plate for machining accuracy



Bottom and vertical spindles with precise guiding of material



Feeding rollers control



Control panel





---

For SOUKUP manufactured in Taiwan

---

**SOUKUP s.r.o.**  
Komerční 518, 251 01 Prague - Nupaky, Czech Republic  
Tel.: +420 241 403 110, E-mail: [info@soukup.cz](mailto:info@soukup.cz)  
[www.soukup.cz](http://www.soukup.cz)